



Best Practices for High-Speed Data Transfer and Migration from Oracle into Greenplum using WisdomForce FastReader

Table of Contents

<i>Overview</i>	<i>2</i>
<i>Chapter 1: Loading data into Greenplum with version up to 3.1.</i>	<i>3</i>
<i>Chapter 2: Loading data into Greenplum version 3.2 and above.</i>	<i>6</i>
2.1 Using escaped non enclosed format.	7
2.2 Using escaped enclosed format.	8

Overview

WisdomForce FastReader™ (www.wisdomforce.com) is high performance data transfer and migration software for high volumes of Oracle data. FastReader supports direct path and parallel extraction and unloads large Oracle databases in a fraction of the usual time into ASCII flat files or pipe.

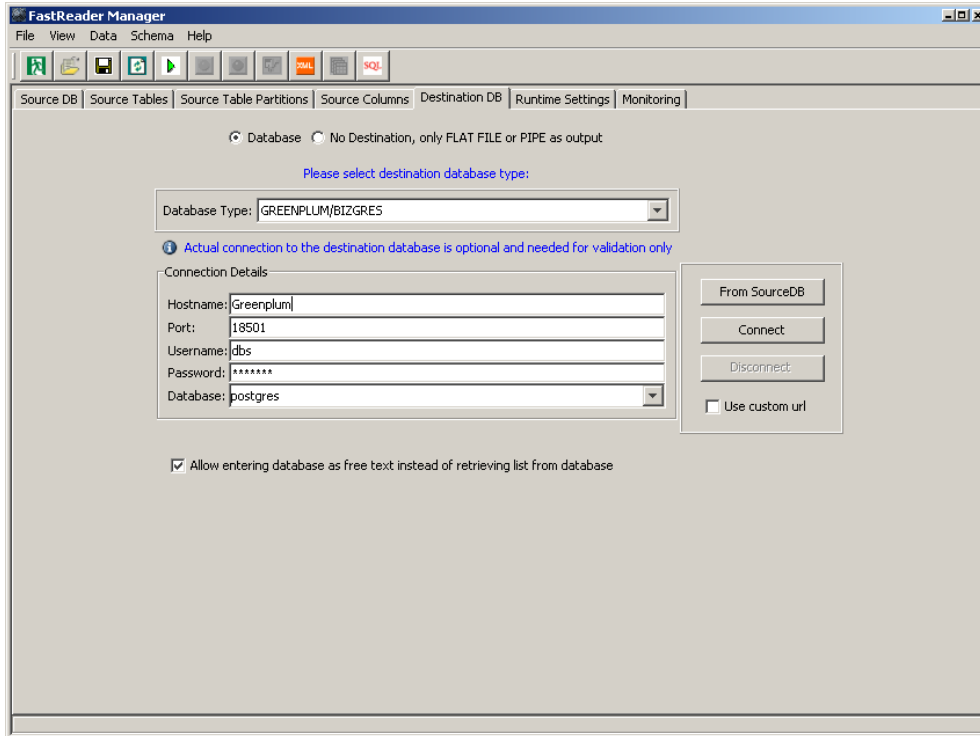
Greenplum Database (www.greenplum.com) is a software solution built to support the next generation of data warehousing and large-scale analytics processing. It utilizes a shared-nothing MPP (massively parallel processing) architecture optimized for business intelligence and analytical processing.

This document describes important points for unloading data from Oracle using FastReader and loading into Greenplum. When Greenplum is chosen as a destination in FastReader and configured, the load scripts for the Greenplum loader are generated during the extraction.

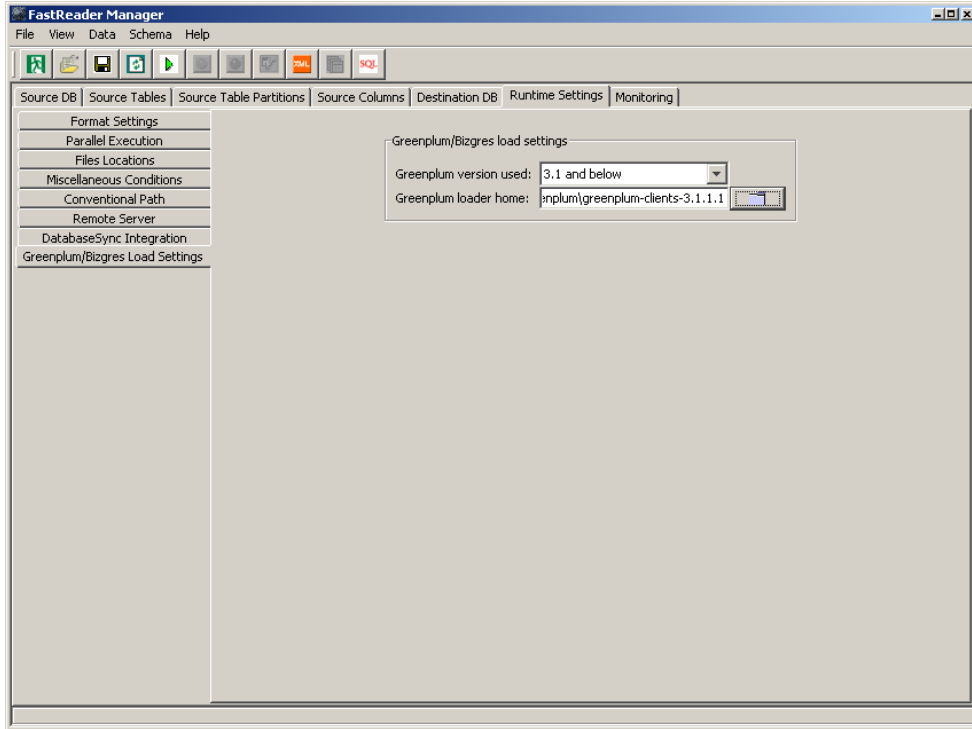
The guide discusses how to extract the data and migrate into Greenplum using WisdomForce FastReader.

Chapter 1: Loading data into Greenplum with version up to 3.1.

In order to load data into Greenplum 3.1 and below database you should to choose GREENPLUM/BIZGRES as your destination database in FastReader GUI, as shown below:



From the main screen choose “*Runtime Settings*” and then choose sub panel “*Greenplum/Bizgres Load Settings*”. In the “Greenplum version used” drop down list choose “3.1 and below”. Now, enter the full path to your Greenplum appropriate loader, as shown below:



Note: Greenplum 3.1 and below version supports only escaped non enclosed formats.

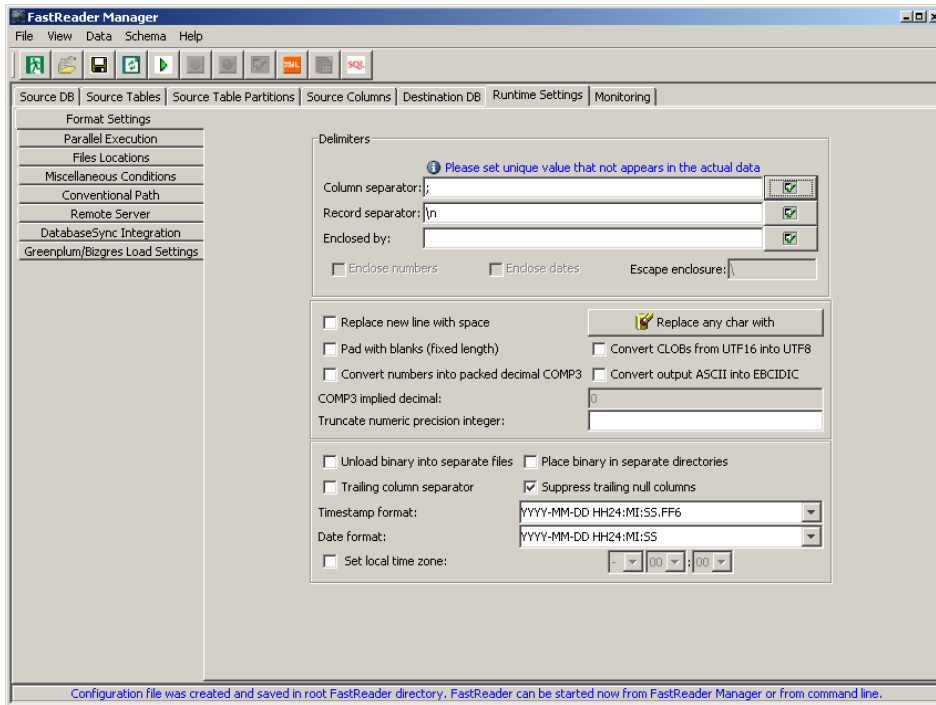
The `[RUN]` section in `unload.ini` FastReader configuration file should contain the following parameters and values:

```
date_format="YYYY-MM-DD HH24:MI:SS"  
timestamp_format="YYYY-MM-DD HH24:MI:SS.FF6"  
replace_new_line_with_space=false  
trailing_column_separator=false  
enclose_numbers=false  
enclose_dates=false  
optionally_enclosed_by=  
escape_enclosure="\"
```

You can choose value other than this standard value for `escape_enclosure` field.

All other settings should have FastReader's default values.

To set the configuration settings from FastReader GUI click "Format Settings" from "Runtime Settings" menu and configure the settings as shown below:



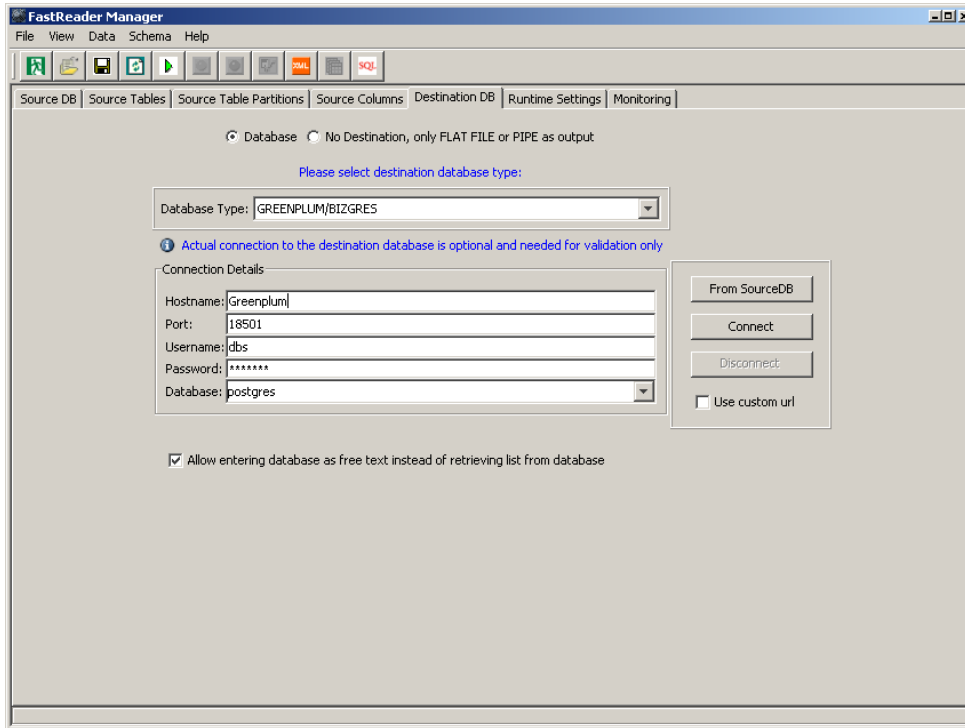
FastReader will generate loading script in a file named TABLE_NAME.sql with following parameters:

WITH DELIMITER AS ';' NULL AS " ESCAPE AS \';

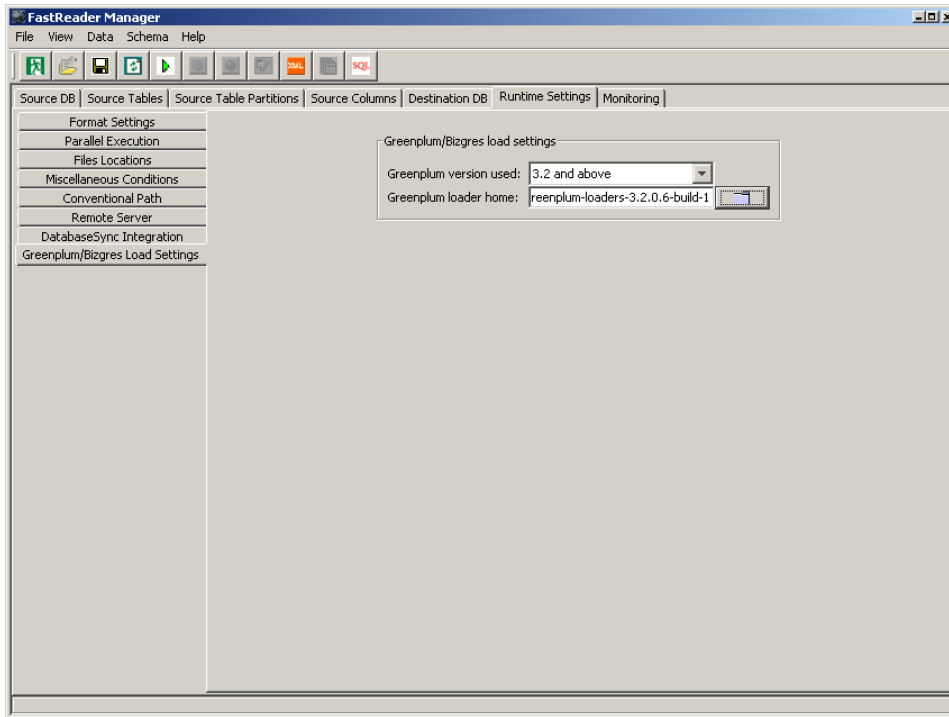
Note: You should generate your FastReader output files on the Greenplum/Bizgres server.

Chapter 2: Loading data into Greenplum version 3.2 and above.

In FastReader GUI choose GREENPLUM/BIZGRES as your destination database, as shown below:



From the main screen choose “*Runtime Settings*” and then choose sub panel “*Greenplum/Bizgres Load Settings*”. In the “*Greenplum version used*” drop down list choose “3.1 and below”. Now, enter the full path to your Greenplum appropriate loader, as shown below:



Note: Greenplum 3.2 and above version supports both escaped non enclosed and escaped enclosed formats.

2.1 Using escaped non enclosed format.

The `[RUN]` section in `unload.ini` FastReader configuration file should contain the following parameters and values:

```
date_format="YYYY-MM-DD HH24:MI:SS"  
timestamp_format="YYYY-MM-DD HH24:MI:SS.FF6"
```

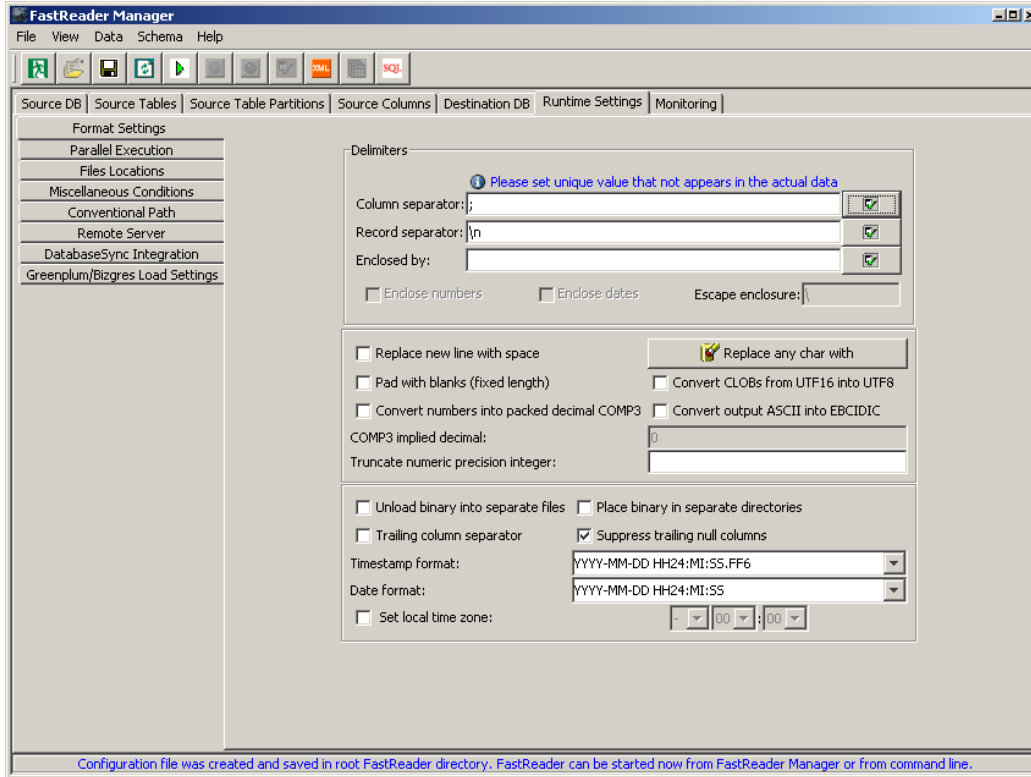
```
replace_new_line_with_space=false  
trailing_column_separator=false
```

```
enclose_numbers=false  
enclose_dates=false  
optionally_enclosed_by=  
escape_enclosure="\"
```

You can choose value other than this standard value for `escape_enclosure` field.

All other settings should have FastReader's default values.

To set the configuration settings from FastReader GUI click "Format Settings" from "Runtime Settings" menu and configure the settings as shown below:



FastReader will generate loading script in a file named TABLE_NAME.ctl with following parameters:

FORMAT: text
DELIMITER: ';'
ESCAPE: '\'

Note: You should generate your FastReader output files on the Greenplum/Bizgres server.

2.2 Using escaped enclosed format.

The [RUN] section in unload.ini FastReader configuration file should contain the following parameters and values:

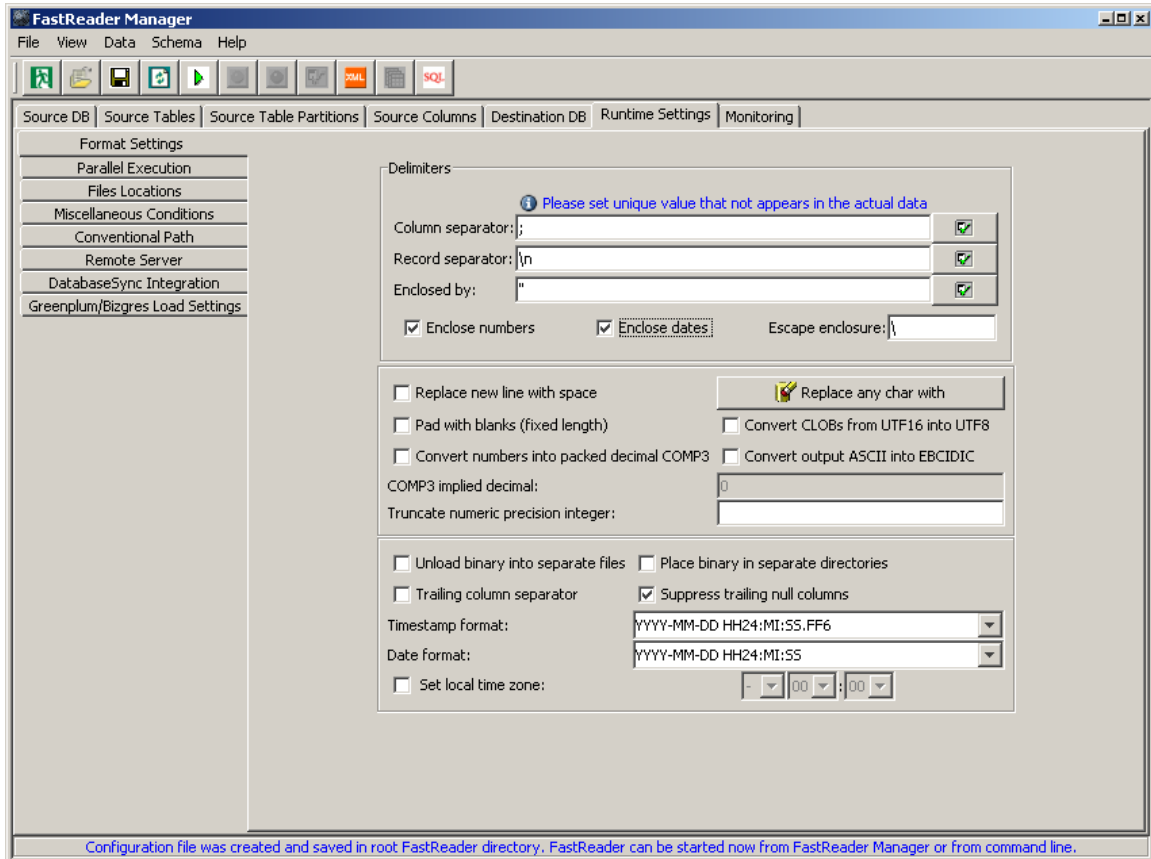
```
date_format="YYYY-MM-DD HH24:MI:SS"  
timestamp_format="YYYY-MM-DD HH24:MI:SS.FF6"  
replace_new_line_with_space=false  
trailing_column_separator=false  
enclose_numbers=true  
enclose_dates=true
```

You can choose values other than these standard values for optionally_enclosed_by and escape_enclosure fields.

optionally_enclosed_by=""
escape_enclosure=""

All other settings should have FastReader's default values.

To set the configuration settings from FastReader GUI click "Format Settings" from "Runtime Settings" menu and configure the settings as shown below:



FastReader will generate loading script in a file named TABLE_NAME.ctl with following parameters:

FORMAT: csv
DELIMITER: ';' ;
QUOTE: ''''
ESCAPE: '\'

Note: You should generate your FastReader output files on the Greenplum/Bizgres server.