

# FastReader™



## Why use FastReader™

- ⇒ High-performance extract data and schema from very large tables into flat text files (or into pipe ) using an efficient advanced algorithms
- ⇒ Extremely low CPU usage, no overhead on production systems
- ⇒ High performance, suitable for OLTP, Data Warehouse, large eCommerce; parallel processing, secure and safe
- ⇒ Intuitive and convenient GUI
- ⇒ EBCDIC and COMP-3 support
- ⇒ Create loaders input for Oracle, MS SQL, Teradata, Netezza, DB2, MySQL, Sybase, HP Neoview, Postgre
- ⇒ Runs on all enterprise platforms - AIX, HPUX, Linux/386, Solaris, Windows, Itanium, Tru64
- ⇒ Can read directly from data files bypassing the Oracle engine
- ⇒ Support for Direct Path unload of Automatic Storage Management (ASM) and compressed tables
- ⇒ Monitoring and reporting
- ⇒ OS authentication
- ⇒ Support of binary, LOB and Spatial objects in direct mode

**FastReader™ a high-performance database acceleration product which gives DBAs, and Developers the ability very quickly extract data from large databases and with no adding system overhead. FastReader™ automatically prepares input for various high-speed loaders.**

## Where to use FastReader™

- ◆ *Quickly move data between different databases from different vendors running on different platforms*

Extract data from Oracle tables in a fraction of the time and load it into MS SQL, Oracle, DB2, MySQL, Teradata with schema generation
- ◆ *Quickly and selectively back-up and fast archiving data from huge production tables*

Perform a quick snapshot of a production table at any point of time using FastReader for archiving to off-line storage
- ◆ *Creating or updating a test environment*

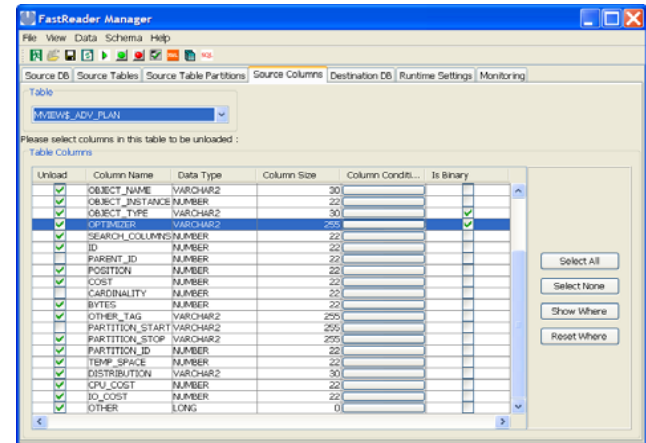
Fast extraction and transportation of large data tables or table partitions from a production system into a test environment database in a fast and convenient way with no system overhead .
- ◆ *Performing high speed initial data synchronization before starting data replication or incremental extracts using the Change Data Capture software such as WisdomForce Database Sync*

Prior to replicating of large production databases the initial synchronization between the source and the destination is highly desired. FastReader can quickly unload data from a source and load this data into a destination database from various vendor, running on various platforms.
- ◆ *Extract and review the content of CLOB or XMLTYPE columns in a portable text format*

## ◆ *Creating backups for Network Attached Storage (NAS) large tables*

When the Database Administrator needs to copy an extremely large table from one production database instance to another, the regular native database export/import utilities are slow and add significant overhead. FastReader resolves this problem by unloading data from a table, residing on a regular disk or SAN into a flat text file on NFS or other NAS mounted device.

**FastReader™ Manager allows for easy selection of tables, partitions and columns from which data will be extracted as well as tuning of runtime parameters.**



**WISDOMFORCE TECHNOLOGIES, INC.**

8501 SE 76th PL.  
Mercer Island, WA 98040  
U.S.A.

Phone: (206) 407-9238  
Fax: (206) 274-4825  
E-mail: [info@wisdomforce.com](mailto:info@wisdomforce.com)

**Download free evaluation version at:**  
<http://www.wisdomforce.com>

**For a quote e-mail: [sales@wisdomforce.com](mailto:sales@wisdomforce.com)**

# FastReader™



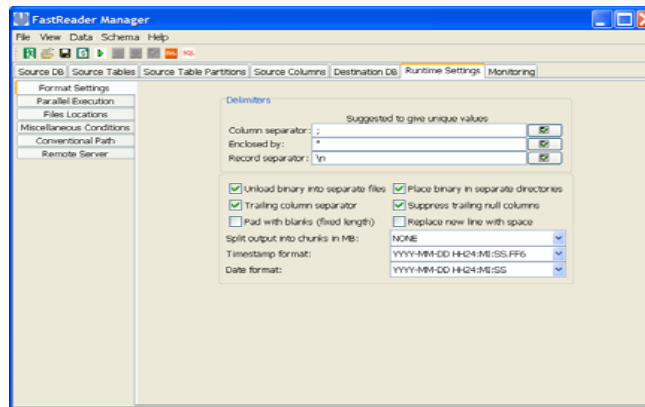
## Advanced FastReader™

- ◆ Support for large Oracle files / raw partitions larger than 2GB and up to the OS and FS implied limit.
- ◆ Extract from ASM storage, dictionary or local managed tablespaces and tablespaces with automatic segment space management,
- ◆ Extract from tablespaces belonging to RAC or OPS with multiple nodes resides on cluster managed raw devices or cluster file systems.
- ◆ Support for chained rows
- ◆ Output in fixed length, EBCDIC, and Comp-3 formats.
- ◆ Extract data into an XML and generate scripts for external tables
- ◆ Enable/disable constraints on the destination database from within FastReader
- ◆ Several independent benchmarks shown extract/load data from/to database using FastReader™ was faster than using direct path export/import
- ◆ FastReader™ is the fastest and has the least system overhead than any existing solution today

*FastReader™ has a rich Command Line Interface (CLI) which allows the users to create custom scripts , helping integrate home grown scripts with FastReader, making the extract process fully automated and scheduled*

## Tuning FastReader™

- ◆ Select a column and row separators in the output file, specify the enclosure of the output data.
- ◆ Select the output directory where output files and control files are to be created
- ◆ Select whether tables in the source database are to be locked or not during extraction of data and how to extract binary data
- ◆ Tune parallel performance parameters to extract single or multiple tables
- ◆ Select whether to skip unreadable blocks and if to try regardless of permission
- ◆ Select directly from sys. Uses *sys.obj\$*, *sys.tab\$*, etc. dictionary tables to get an extent boundaries.
- ◆ Tune multi-block read and write performance parameters
- ◆ Passwords are stored in encrypted format



- ◆ Options for OS authentication and direct connection
- ◆ Select whether to load data back to the source database or just to extract data without generating control files
- ◆ Specify row based filtering
- ◆ Drop/disable constraints before load on destination and create/enable afterward
- ◆ Support for on-the-fly compression of the extracted data in a standard zlib format (gzip compatible)
- ◆ Significantly improved write performance using on-the-fly compression with an optimized lz77 based format.
- ◆ Remote management controls multiple data extraction agents on multiple platforms using centralized GUI
- ◆ Cascade data processing facility allows to stream output data to a remote host in a compressed format for immediate load into a destination database.

***FastReader™ can validate the data to be extracted and is able to determine whether the destination's database structure is***

**WISDOMFORCE TECHNOLOGIES, INC.**

8501 SE 76th PL.  
Mercer Island, WA 98040  
U.S.A.

Phone: (206) 407-9238  
Fax: (206) 274-4825  
E-mail: [info@wisdomforce.com](mailto:info@wisdomforce.com)

**Download free evaluation version at:**  
<http://www.wisdomforce.com>

**For a quote e-mail: [sales@wisdomforce.com](mailto:sales@wisdomforce.com)**