

Database Sync



Is your organization seeking a near real-time Data warehouse or real-time reporting? WisdomForce Database Sync connects your disperse databases and keeps them in sync while preserving full transactional consistency

Where to use Database Sync

Integrating heterogeneous data.

Many systems and applications depend on data being sent between databases made by different vendors and running on various platforms; hardware and operating systems. Use Database Sync to integrate data in a heterogeneous environment.

Data Warehousing.

Database Sync serves to populate Data Warehouses with the most recent changes performed on OLTP Systems in near real-time.

Real-Time Reporting for critical and timely decision making.

Database Sync replaces batch process ETL tools with real-time synchronization between production databases and databases used for reporting.

Zero Downtime Migrations

Both the source and the destination can be up and accept updates in real time. This can eliminate downtime during migration between various vendor databases.

In combination with WisdomForce FastReader, Database Sync provides an extremely fast, Zero-Downtime database migration solution.

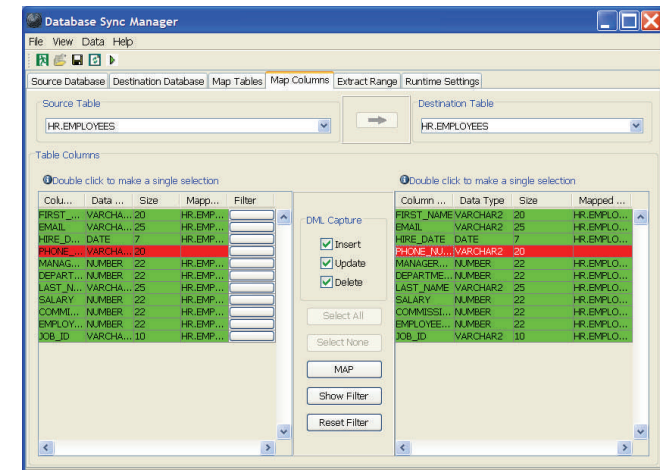
Query Offloading for Web Systems.

Database Sync allows synchronizing data to low cost MySQL or PostgreSQL servers efficiently for cost effective query offloading.

Back-up Systems.

Database Sync allows seamless and easy creation and maintenance of hot-backup standby servers. Only transactional changes from source database systems are propagated. Specific tables or schemas may be selectively backed-up.

Database Sync Manager allows easy selection of tables and columns and configuring Database Sync run time settings



WISDOMFORCE TECHNOLOGIES, INC.

8501 SE 76th PL.
Mercer Island, WA 98040
U.S.A.

Phone: (206) 407-9238
Fax: (206) 274-4825
E-mail: info@wisdomforce.com

Download a free evaluation version at:
<http://www.wisdomforce.com>

For a quote e-mail: sales@wisdomforce.com

Why use Database Sync

- ⇒ High performance transaction based change data capture
- ⇒ Logical level replication, choose the tables and columns to keep synchronized
- ⇒ Database replication between distributed heterogeneous databases with high transaction throughput
- ⇒ Transactional integrity is maintained
- ⇒ Heterogeneous database vendor and operating system support
- ⇒ High performance, suitable for OLTP, Data Warehouse, large eCommerce
- ⇒ Safe and secure
- ⇒ Convenient and user-friendly GUI
- ⇒ Easy to configure and tune
- ⇒ Log processing can be offloaded
- ⇒ Propagated changes are compressed for better network and storage utilization
- ⇒ Incrementally feed changes to Data Warehouse system
- ⇒ Support for Compressed and IOT tables

Database Sync



Near real-time replication

Database Sync performs data replication in near real-time and allows for very low latency between the source

Multiple operating system and hardware support

DBSync is a real multiplatform solution supporting most UNIX, Windows and Linux platforms

Data transformations ability

DBSync engine is capable of not just simple replication of data but can also translate and transform the data as it is replicated between different databases. By defining the replication and transformation rules, DBSync is able to move data from one heterogeneous data source to another.

For example, DBSync is able to replicate an Oracle date column to an MS SQL date column. This feature reduces the need to create custom data transformation rules

Reliability

DBSync allows building highly available and fault tolerant distributed data movement system by using the best breed of server technologies and proved software infrastructure solutions

Database Sync Product Features

- ◆ **Data mapping**
DBSync allows flexibility in mapping source and destination tables and columns. Data schemas can be different on both systems
- ◆ **Multiple destinations**
Multiple data destinations can be defined which would receive all or part of the changes
- ◆ **Advanced Feature Support**
Support for Oracle ASM, Real Application Clusters (RAC), compressed and IOT tables
- ◆ **Low system overhead**
DBSync adds a very low system overhead while performing database operations since DBSync implements low-level I/O disk operations. It actually performs replication activities in a way transparent to the DBMS server. Optionally the processing can be offloaded to the destination server or another server with a different architecture
- ◆ **Fast, online, initial data synchronization**
A high performance method is included with DBSync in order to perform one time initially synchronization. The synchronization step can be performed when the source system is completely functional and accepting updates. The changes are captured appropriately and the synchronization is transactionally consistent
- ◆ **Various destinations are supported**
Destination systems can be Oracle, Teradata, Netezza, SQL Server, Sybase, MySQL, PostgreSQL, DB2 and others as high-speed Appliers. Custom integration solutions are also available
- ◆ **Transactional Audit**
Audit Destinations table contain transactional changes for every DML executed on the source

How Database Sync works

- ◆ **Data mapping between the source and the destination using DBSync Manager**
- ◆ **Initial synchronization is performed by using a built in utility or FastReader**
- ◆ **Changes are captured directly from Oracle transaction logs**
- ◆ **Database changes are collected, forming transactions and are delivered to the destination in a high throughput process**
- ◆ **The changes are written to the destination RDBMS server using bulk processing**
- ◆ **Data is being translated and transformed as it is replicated according to the defined replication and transformation rules**
- ◆ **Audit Destinations table contains the before and after state of every updated row**

WISDOMFORCE TECHNOLOGIES, INC.

8501 SE 76th PL.
Mercer Island, WA 98040
U.S.A.

Phone: (206) 407-9238
Fax: (206) 274-4825
E-mail: info@wisdomforce.com

Download a free evaluation version at:
<http://www.wisdomforce.com>

For a quote e-mail: sales@wisdomforce.com